



Company Facts

- Founded early 2000 in France
- Headquartered in Montreal since 2003
- 6 years of fundamental and industrial R&D
- 7 worldwide patents
- Recipient of 2007 Frost & Sullivan Technology Innovation Award

See everywhere from anywhere...



Patents

US - Patents Registered:
6,865,028; 6,844,990;
6,885,817; 6,895,180;
US - Patents Pending:
US-2004-0109078-A1
Europe - Patents Pending:
1,386,480; 1,362,255;
1,362,477; 1,421,442
France - Patents Registered:
2,826,221; 2,821,167;
2,821,172; 2,821,156;
2,827,680
France - Patent Pending:
512,499
Japan - Patents Pending:
2002-566687; 2003-515912
China - Patents Pending:
1,554,034

Leader in Panoramic Imaging Technology

ImmerVision is a world leader in **panoramic imaging technology**, with a unique panomorph lens technology that enables a 360° image to be captured from only one standard camera and navigated without distortion, **using any common device such as a computer, PDA or mobile phone.**

With considerable expertise in both panomorph optic design and algorithms, ImmerVision develops panoramic technology for a wide range of applications. These technologies are integrated into solutions by manufacturers of commodity products as well as equipment manufacturers supplying government organizations and other institutions.

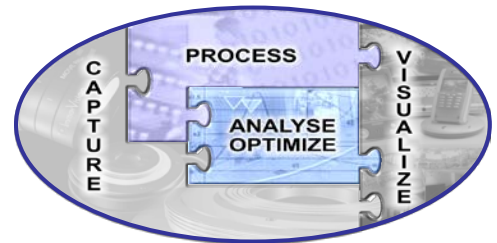
Key to ImmerVision's success is the **accessibility** of their revolutionary panoramic lens designs and powerful software algorithms – which takes “user friendly” to new levels so that consumers all over the world can easily employ and enjoy this immersive technology.

With a mission to “**invent and bring panoramic technology to the world**”, they continue to extend their capabilities and value propositions to a wider net of leading manufacturers and their clients.

ImmerVision Technology

ImmerVision's adaptable “Core Technology” is at the leading edge of today's innovative 360° panoramic imaging field. Recent breakthroughs in this field have made the user experience an exciting immersion in both hardware and software evolutions – a unique foray into the future. As part of their unique offering, ImmerVision's Core Technology is a result of expertise and focused R&D in four areas:

- **Image Capture:** 360° panomorph lenses designed to meet specific industry needs
- **Processing:** Software with the capability of editing the panoramic video stream or panoramic still images
- **Analysis/Optimization:** Advanced algorithms that enable 360° functionality for various software programs on multiple platforms
- **Visualization:** A set of video and multimedia players that can run on numerous platforms (i.e. PC, Mac, PDAs, mobile phones, etc.)



ImmerVision Core Technology

ImmerVision Panomorph Lenses

ImmerVision has created a revolutionary new panomorph lens design that outperforms by far any conventional wide angle lenses (such as catadioptric/mirror or fisheye). ImmerVision's panomorph lens produces a much larger footprint on the sensor, using at least 30% more pixels than the circular-shaped footprint produced by conventional lenses. In addition, ImmerVision can optimize each panomorph lens design to allow improved resolution on specified areas of the sensor.



Panomorph lens



Fisheye lens

ImmerVision Software

Since 2000, ImmerVision has been invested in creating and optimizing high-performing algorithms that allow even the weakest electronic devices to display panoramic content. Today, these powerful algorithms are used in various software solutions for ImmerVision clients, allowing fast and undistorted viewing of still pictures and live or playback video streams.

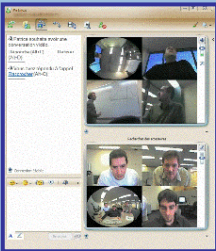
Never miss anything again!



- Total 360° viewing, recording and playback
- Multiple simultaneous views with a single camera
- Full digital PTZ functionality



See everyone in the picture!



ImmerVision Products

Manufacturers around the world benefit from ImmerVision's leading-edge panoramic technology, allowing them to bring their own innovative solutions to market. ImmerVision today delivers its customisable Core Technology through four business units: Video Surveillance Applications, Consumer Communication Applications, Multimedia Applications and Custom Panoramic Applications.

Video Surveillance Applications

To address today's security challenges in achieving complete surveillance of public and private areas, ImmerVision developed a set of unique Panomorph lenses for this industry that enables 360° panoramic surveillance with IP and traditional CCTV equipment.

The **IMV1-1/3 lens from ImmerVision** is the only 360° security lens that can be used with a standard CCTV video camera on traditional security networks, or with a new IP video camera on broadband networks. In addition, the IMV1-1/3 lens is DVR-independent, allowing customers to use their preferred brand.



ImmerVision provides the software development kit required to integrate the IMV1 video library to DVR and NVR manufacturers at no cost, in order to enable their customers with digital 360° PTZ functionality. This panoramic functionality can be found in products worldwide displaying the "ImmerVision Enables" logo.

Consumer Electronic Applications

WebCube and 360° Mobile Phones - The *latest* in personal live communications.



ImmerVision's new panomorph lens can simultaneously capture 360° of real-time video, allowing all participants seated at a table, standing nearby a laptop computer or walking on the street to be visible during a video call. ImmerVision players can work with most popular communication software applications running on Windows, Mac and Linux platforms, providing global and/or individualized navigation control and personalized panoramic views.

Multimedia Applications

PURE TOOLS - A *new evolution* in digital panoramic imaging.

Following the worldwide success of ImmerVision free PURE Player for Flash, for Java, for Windows and for Windows Mobile, ImmerVision launched a suite of professional software modules called PURE TOOLS. This new imaging concept is guaranteed to push the boundaries of today's panoramic content editing and visualization capabilities, ensuring the most immersive experience available yet.



Custom Panoramic Applications

ImmerVision further customises its Core Technology to meet the most demanding niche industry such as medical devices, the automotive industry, aerospace, machine vision technology and entertainment. While its customers invent, design and manufacture their panoramic applications, ImmerVision provide them its leading edge panomorph technology to their specifications.

Management

Pascale Nini, President and Chief Executive Officer

Alessandro Gasparini, Senior Vice President – Sales & Marketing, Chief Commercial Officer

Gib de Medeiros, Vice President – Custom Panoramic Applications

Pierre Sergerie, Vice President – Consumer Electronic Applications

ImmerVision

For more information, go to www.immervision.com.

ImmerVision
2020 University, Suite 2320
Montreal, Quebec H3A 2A5
Canada
Tel.: +1 (514) 985-4007
Fax: +1 (514) 282-8612
www.immervision.com